

TECHNICAL INFORMATION

Document: TI_T318_038

Date: 10/02/2021

Subject: TI_T318_038_Steering_Pinion_Rack_&_spacer_compatibility

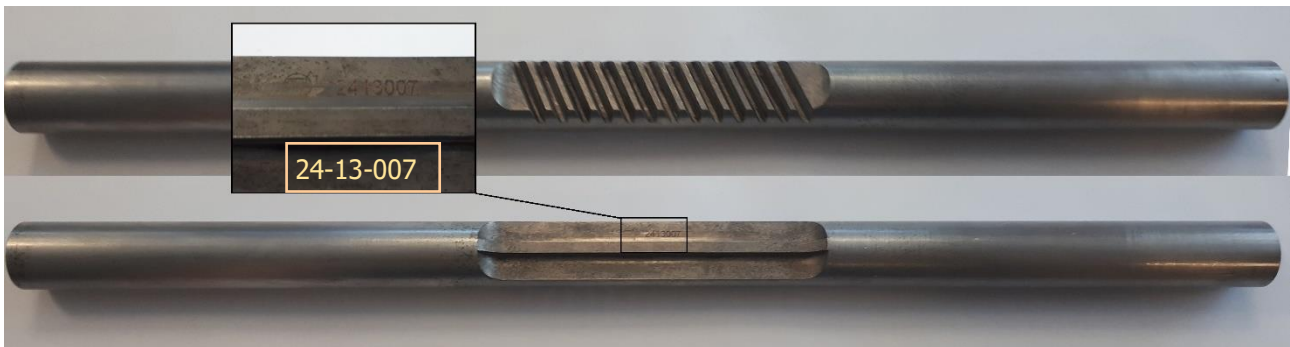
Reference:	Table	Item	Code
	13A	1	2413007
	13A	6	090909019
	13A	5	2413020

Accomplishment: immediate

Steering rack and pinion

With reference to the technical information #10, the 8 teeth steering pinion and the relative steering rack has a laser marking variant. Please find below specification

- 24-13-007: steering rack for 8 teeth pinion

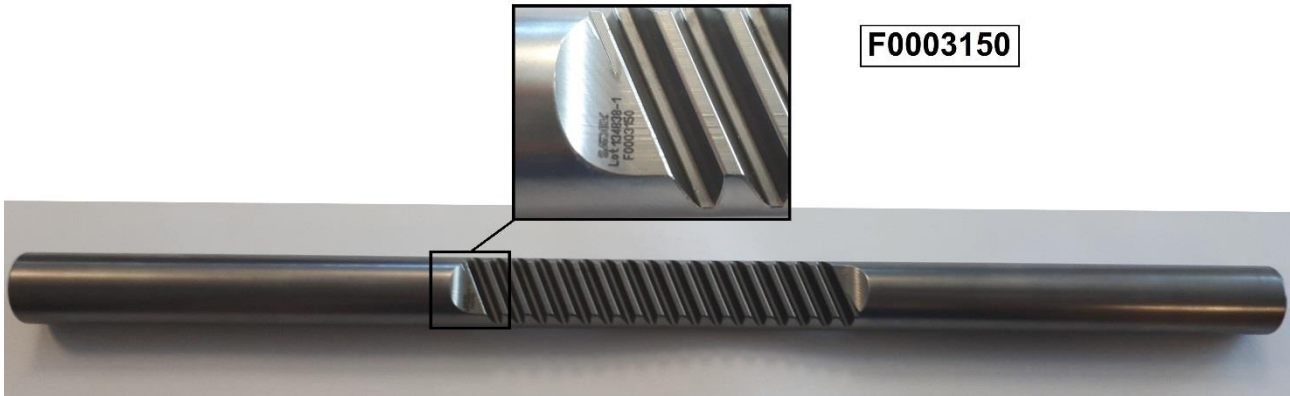


- 09-09-09-019: 8 teeth pinion

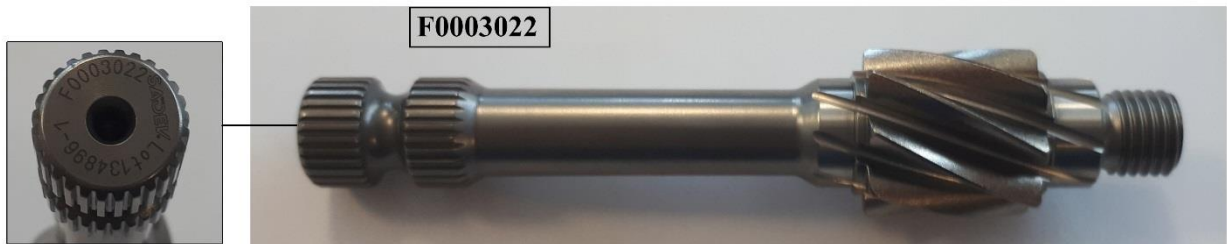


Alternative marking:

- F0003150: steering rack for 8 teeth pinion



- F0003022: 8 teeth pinion



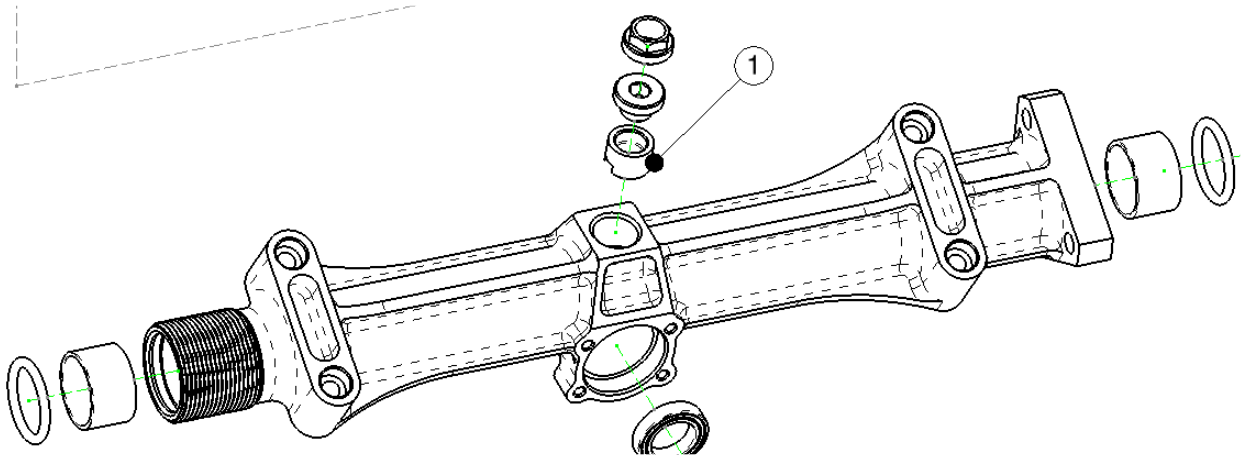
Tatus recommends to pairing laser marked 24-13-007 only with 09-09-09-019 and F0003150 only with F0003022.

The steering rack and pinion laser marked 24-13-007 and 09-09-09-019 has been discontinued. Only the parts laser marked F0003150 and F0003022 will be available.

The reference part number will remain 24-13-007 for the rack and 09-09-09-019 for the pinion.

Adjuster spacer

With reference to the item shown with number 1 in the picture below, adjuster spacer



The part is available with 2 variants with different part number 2413020 and 030309011005.

Please consider the table below for the compatibility of the 2 variants with the steering racks

		Adjuster spacer		
		Part number		
		2413020	030309011005	
Steering rack	Laser marking	2413007	OK	NOK
		F0003150	OK	OK
		F0003149	OK	OK